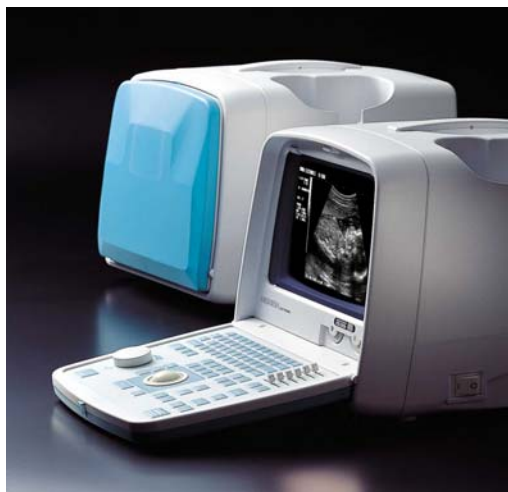


# Honda HS-2000V Portable Ultrasound Scanner

**Manufacturer: Honda Electronics**

**Model: HS-2000V Veterinary Ultrasound System**



## **Summary:**

The Honda HS-2000V portable veterinary ultrasound scanner is truly compact yet attractive: featuring outstanding technology that will enable the user to fulfil the present and future requirements for diagnosis within the ultrasound field.

A powerful portable ultrasound system able to run a range of Linear, Convex and Microconvex probes. Excellent Image quality coupled with Image storage, comprehensive veterinary software and multi-frequency probes make this ideal for the clinic, farm or stud.

## **SPECIFICATIONS**

### **Scanning Method**

- Linear / Convex / Microconvex electronic scan

### **Display Mode**

- B mode (single)
- B/B mode (double)
- B/M mode (4 step sweep speed selection on M mode)

### **Monitor**

- 9 inch B/W monitor
- 256 greyscales

### **Range**

- 3.5MHz  
24cm, 18cm, 15cm, 12cm, 9cm, 6cm
- 5.0, 7.5, 10.0 and 12.5MHz  
16cm, 12cm, 10cm, 8cm, 6cm, 4cm

### **Focusing Method**

- Transmitter  
4-stage dynamic focus
- Receiver  
Real-time dynamic focus

### **Image Adjustment**

- Dynamic range  
from 35 to 95 with 10dB step selection
- B-gain, M-gain  
36-100dB variable by rotary encoders (1dB step)
- STC  
6 step sliding volume on adjusted depth levels

### **Image Processing**

- Frame correlation  
On (2-step) / off selection
- Line correlation  
On (2-step) / off selection
- Grey curve selection

### **Image Display**

- Image direction  
Reverse (Left/Right), Up/Down
- Shift  
1cm step (max. depth 18cm)
- Cine Memory: 41 frames

**Image Store**

- Flash memory (60 images)

**Image Functions**

- Practise name (32 char.)
- Patient name & ID No. (26 char. / 1000 patients)
- Age
- Date and Time
- Probe type
- Image direction
- Range

**Measurement Function**

- Distance
- Circumference, Area
- Volume
- Angle
- Gestational weeks calculation
- LV calculation
- Tendon %
- User programmable tables

**Interface**

- Video output  
Two channel
- Video input  
One channel
- RS-232 port

**Dimensions**

- Approx. 298(W) x 380(D) x 300(H)  
(keyboard closed)
- 298(W) x 580(D) x 300(H)  
(keyboard open)

**Weight**

- Approx. 12kg

**Power Source**

- 100V-240V AC 50/60Hz

**Probe Connector**

- 2 (selected by keyboard)

**Probes**

- HCS-436M 2.8/3.5/5.0MHz 60R  
Convex Probe
- HLV-475M 5.0/7.5/9.0MHz 50mm  
Veterinary Rectal Probe
- HCS-452M 3.0/5.0/7.0MHz 20R  
Microconvex Probe
- HCS-4710M 5.0/7.5/9.0MHz 10R  
Microconvex Probe
- HCV-4710MV 5.0/7.5/9.0MHz 10R  
Long Handled Microconvex Probe
- HLS-438M 2.8/3.5/5.0MHz 80mm  
Linear Probe
- HLS-475M 5.0/7.5/10MHz 50mm  
Linear Probe
- HLS-413M 7.5/10.0/12.5MHz  
30mm Linear Probe

**Options**

- Video printer
- Image utility software to allow the  
transfer of stored JPEG images
- Foot switch
- Biopsy guide
- Trolley
- External monitor
- Padded carry case
- Stand-offs

*\*The specification is subject to change without notice*